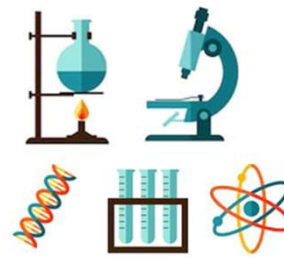




KS5 APPLIED SCIENCE BTEC @chaseterraceacademy



Unit 2D - self reflection
Practical Scientific
Procedures & Techniques

**Yr 13 Applied
Science BTEC**

Unit 2A - titration
Practical Scientific
Procedures & Techniques

Unit 2B - calorimetry
Practical Scientific
Procedures & Techniques

**Unit 1
exams**

**Unit 1C
Physics**
Principles &
Applications of Science

**Yr 12
Unit 1
mock
exams**

**Unit 1A
Chemistry**
Principles &
Applications of Science

**Yr 12
Baseline
Assessment**

Unit 2C - chromatography
Practical Scientific
Procedures & Techniques

Yr 12

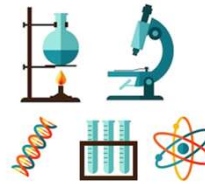
M.E.

**Unit 1B
Biology**
Principles &
Applications of Science

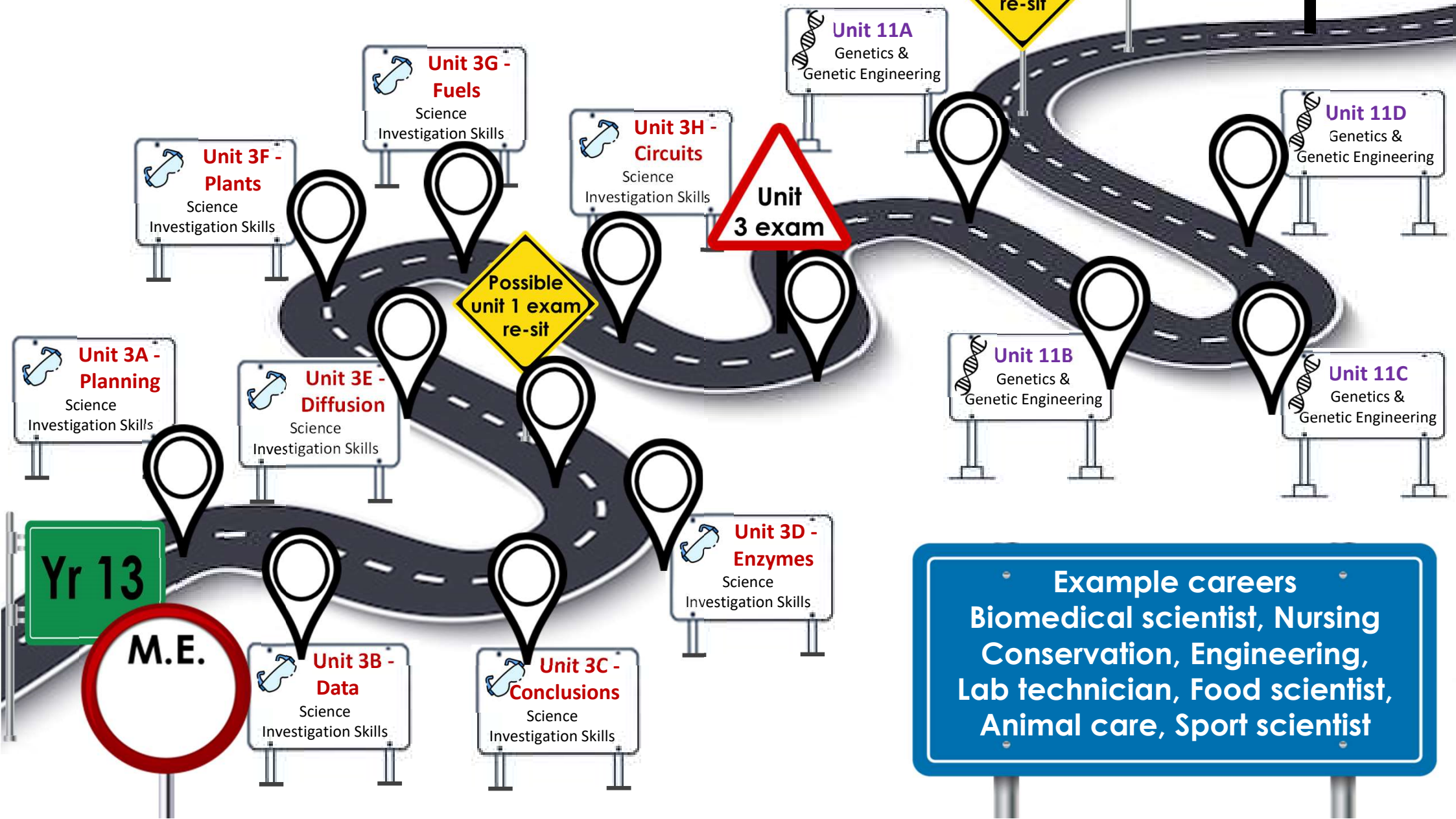
Example careers
Biomedical scientist, Nursing
Conservation, Engineering,
Lab technician, Food scientist,
Animal care, Sport scientist



KS5 APPLIED SCIENCE BTEC @chaseterraceacademy



University
Apprenticeship
Career



Example careers
Biomedical scientist, Nursing
Conservation, Engineering,
Lab technician, Food scientist,
Animal care, Sport scientist