

Please check the examination details below before entering your candidate information

Candidate surname

Other names

**Pearson Edexcel**  
**Level 1/Level 2 GCSE (9-1)**

Centre Number

--	--	--	--	--

Candidate Number

--	--	--	--

**Time** 1 hour 30 minutes

**Paper reference**

**1MA1/1F**

**Mathematics**  
**PAPER 1 (Non-Calculator)**  
**Foundation Tier**

\* SOLUTIONS \*

**You must have:** Ruler graduated in centimetres and millimetres, protractor, pair of compasses, pen, HB pencil, eraser, Formulae Sheet (enclosed). Tracing paper may be used.

Total Marks

--

### Instructions

- Use **black** ink or ball-point pen.
- **Fill in the boxes** at the top of this page with your name, centre number and candidate number.
- Answer **all** questions.
- Answer the questions in the spaces provided  
– *there may be more space than you need.*
- You must **show all your working**.
- Diagrams are **NOT** accurately drawn, unless otherwise indicated.
- **Calculators may not be used.**



### Information

- The total mark for this paper is 80
- The marks for **each** question are shown in brackets  
– *use this as a guide as to how much time to spend on each question.*

### Advice

- Read each question carefully before you start to answer it.
- Try to answer every question.
- Check your answers if you have time at the end.
- Good luck with your examination.

Turn over ►

P66306RA

©2021 Pearson Education Ltd.

1/1/1/1/1



P 6 6 3 0 6 R A 0 1 2 4



Pearson

Answer ALL questions.

Write your answers in the spaces provided.

You must write down all the stages in your working.

- 1 Change 40 centimetres into millimetres.

$$\begin{array}{l} \xrightarrow{\times 10} \\ 1 \text{ cm} = 10 \text{ mm} \\ 40 \times 10 = 400 \end{array}$$

..... 400 ..... millimetres

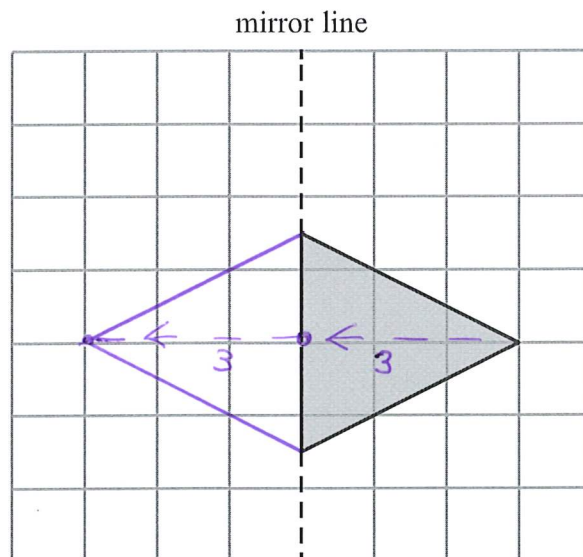
(Total for Question 1 is 1 mark)

- 2 Simplify  $e + e + e + e$

..... 4e .....

(Total for Question 2 is 1 mark)

- 3 On the grid, reflect the shaded triangle in the mirror line.



(Total for Question 3 is 1 mark)



DO NOT WRITE IN THIS AREA

DO NOT WRITE IN THIS AREA

DO NOT WRITE IN THIS AREA

4 Write down the value of the 6 in the number 16007

Th

6 thousand

(Total for Question 4 is 1 mark)


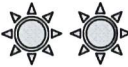
5 Write these numbers in order of size.  
Start with the smallest number.


$\frac{1}{2}$     0.55    45%  
0.50    0.55    0.45

45%,  $\frac{1}{2}$ , 0.55

(Total for Question 5 is 1 mark)

6 The pictogram gives information about the number of hours of sunshine on a Saturday and on a Sunday.

Saturday	
Sunday	

Key:  represents 2 hours of sunshine

Work out the number of hours of sunshine on Saturday.

$4 \times 2 = 8$

8 hours

(Total for Question 6 is 1 mark)



- 7 Simon buys some candles.  
Each candle costs £2

Simon pays with a £20 note.  
He gets £6 change.

$$\text{]} \rightarrow 20 - 6 = \underline{\pounds}14 \text{ spent}$$

Work out the number of candles Simon buys.

$$14 \div 2 = 7$$

7

(Total for Question 7 is 3 marks)

DO NOT WRITE IN THIS AREA

DO NOT WRITE IN THIS AREA

DO NOT WRITE IN THIS AREA

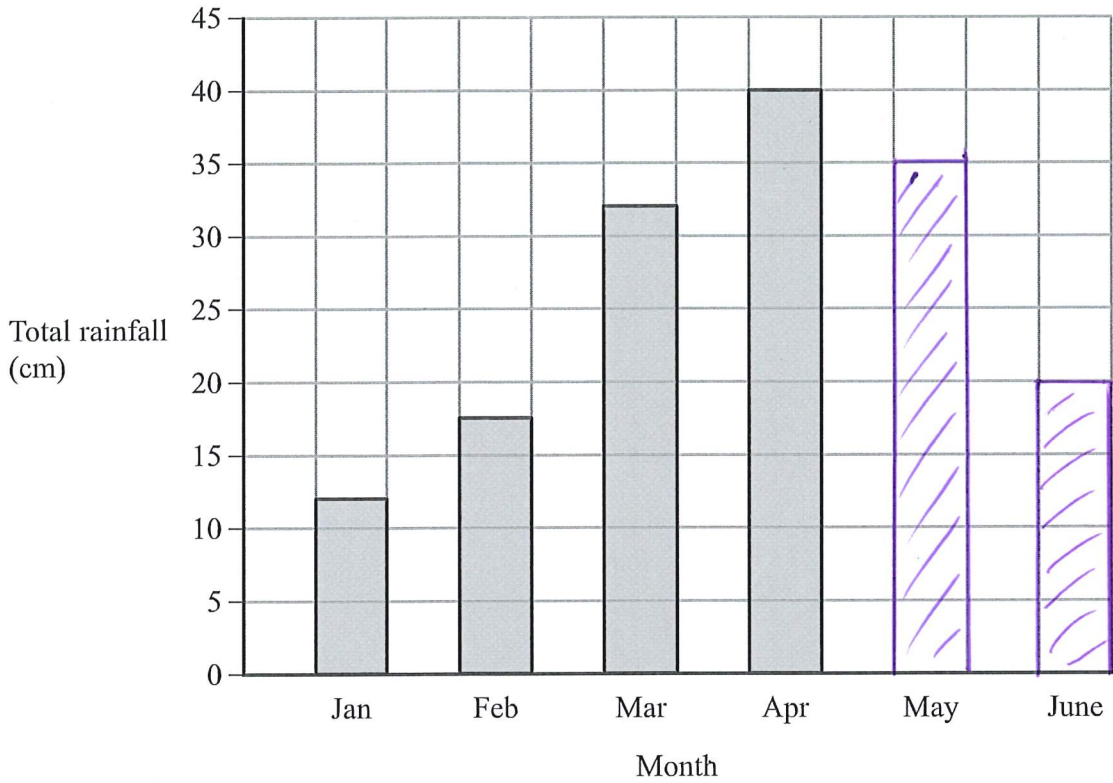


DO NOT WRITE IN THIS AREA

DO NOT WRITE IN THIS AREA

DO NOT WRITE IN THIS AREA

8 The bar chart shows information about the total rainfall each month for four months in a city.



In May, the total rainfall was 35 cm.  
In June, the total rainfall was 20 cm.



(a) Use this information to complete the bar chart.

(2)

Rupa says,

“In February there was 15.5 cm of rainfall because the bar is half a square above 15”

(b) Explain why Rupa is incorrect.

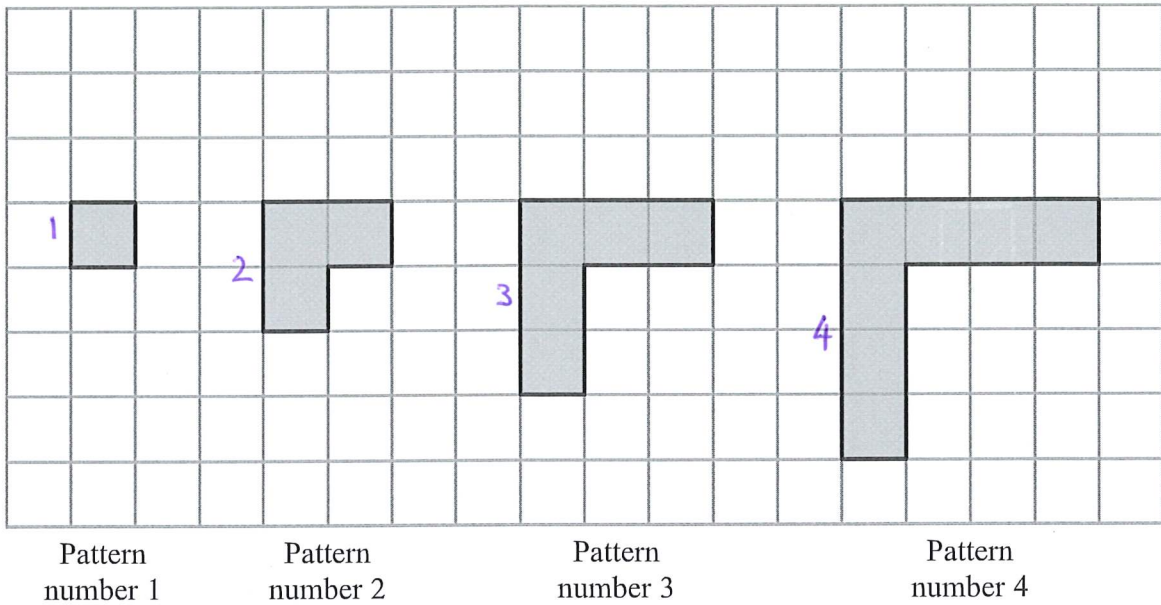
eg Each square (vertically) is 5cm,  
not 1cm  
(It would be 17.5cm)

(1)

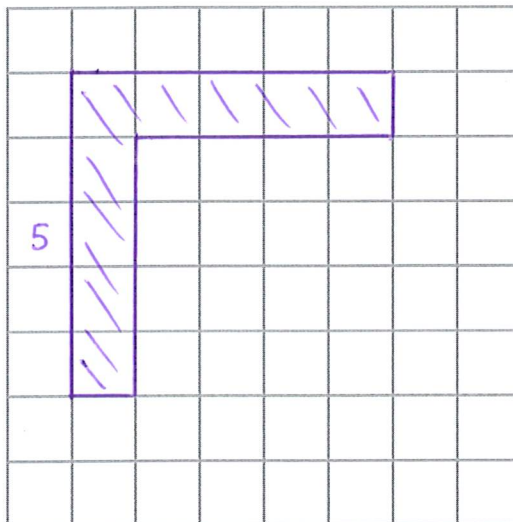
(Total for Question 8 is 3 marks)



9 Here is a sequence of patterns made from grey square tiles.



(a) On the grid below, draw Pattern number 5



(1)

(b) Complete the table.

Pattern number	1	2	3	4	5	6
Number of squares	1	3	5	7	9	11

(1)

(Total for Question 9 is 2 marks)



DO NOT WRITE IN THIS AREA

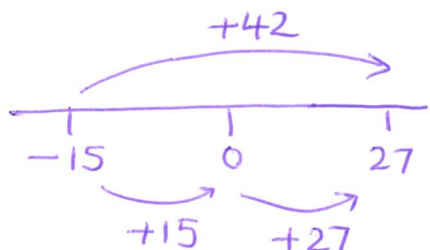
DO NOT WRITE IN THIS AREA

DO NOT WRITE IN THIS AREA

- 10 In Norway last year, the lowest temperature was  $-15^{\circ}\text{C}$ .  
 In Norway last year, the highest temperature was  $42^{\circ}\text{C}$  greater than the lowest temperature.

Work out the highest temperature in Norway last year.

$-15 + 42$  ← [ We could rearrange this as  $42 - 15$  ]



..... 27 .....  $^{\circ}\text{C}$

(Total for Question 10 is 2 marks)

- 11 At the end of October, Fiona's electricity meter reads 88 738 kWh.  
 At the end of November, her electricity meter reads 89 198 kWh.

Each kWh of electricity Fiona uses costs 16p

Work out how much Fiona had to pay for the electricity she used in November.

$$\begin{array}{r}
 88\ 198 \\
 - 88\ 738 \\
 \hline
 00\ 460 \text{ (kWh used)}
 \end{array}$$

$$\begin{array}{r}
 460 \\
 \times 16 \\
 \hline
 2760 \\
 3\ 4600 \\
 \hline
 7\ 360 \text{ pence}
 \end{array}$$

..... £73.60

(Total for Question 11 is 4 marks)



12 (a) Work out  $\frac{5}{12} + \frac{1}{6}$

$$= \frac{5}{12} + \frac{2}{12}$$

$$= \frac{7}{12}$$

$$\frac{1}{6} \xrightarrow{\times 2} \frac{2}{12}$$

$$\frac{7}{12}$$

(2)

(b) Work out  $\frac{3}{10} \times \frac{5}{8}$

Give your answer as a fraction in its simplest form.

$$= \frac{15}{80}$$

$\swarrow 3 \times 5$   
 $\nwarrow 10 \times 8$

$$\frac{15}{80} \xrightarrow{\div 5} \frac{3}{16}$$

$$\frac{3}{16}$$

(2)

(Total for Question 12 is 4 marks)

DO NOT WRITE IN THIS AREA

DO NOT WRITE IN THIS AREA

DO NOT WRITE IN THIS AREA



DO NOT WRITE IN THIS AREA

DO NOT WRITE IN THIS AREA

DO NOT WRITE IN THIS AREA

13 There are 15 sweets in a jar.  
4 of the sweets are red.

Jill takes at random a sweet from the jar.

(a) Write down the probability that the sweet is red.

$$\frac{4}{15}$$

(1)

There are only green counters and blue counters in a bag.

A counter is taken at random from the bag.  
The probability that the counter is green is 0.3

(b) Find the probability that the counter is blue.

$$1 - 0.3 = 0.7$$

$$0.7$$

(1)

(Total for Question 13 is 2 marks)

14  $y = 6x - 5$

Work out the value of  $y$  when  $x = 4$

$$\begin{aligned} y &= 6 \times \underline{x} - 5 \\ &= 6 \times \underline{4} - 5 \\ &= 24 - 5 \\ &= 19 \end{aligned}$$

$$y = \underline{19}$$

(Total for Question 14 is 2 marks)



15 (a) Work out an estimate for the value of  $92 \times 1.63$

You must show all your working.

$$\begin{array}{c} \downarrow \quad \downarrow \\ 90 \times 2 = 180 \end{array}$$

180  
-----  
(2)

Given that

$$2.96 \times 3.2 = 9.472$$

(b) find the value of  $29.6 \times 32$

$$\begin{array}{c} \times 10 \quad \times 10 \quad \times 10 \quad \times 10 \quad \times 10 \quad \times 10 \quad \times 10 \quad \times 10 \\ \swarrow \quad \searrow \quad \swarrow \quad \searrow \quad \swarrow \quad \searrow \quad \swarrow \quad \searrow \\ 2.96 \times 3.2 = 9.472 \\ \swarrow \quad \searrow \\ 29.6 \times 32 \\ \swarrow \quad \searrow \\ 947.2 \end{array} \quad \begin{array}{c} \times 10 \\ \times 10 \end{array} \quad \begin{array}{c} \text{(or } \times 100) \end{array}$$

947.2  
-----  
(1)

(Total for Question 15 is 3 marks)

DO NOT WRITE IN THIS AREA

DO NOT WRITE IN THIS AREA

DO NOT WRITE IN THIS AREA



DO NOT WRITE IN THIS AREA

DO NOT WRITE IN THIS AREA

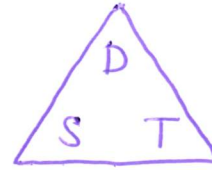
DO NOT WRITE IN THIS AREA

16 Savio leaves his home at 0730 to drive to work.

He drives a distance of 50 miles.

Savio thinks he drives at an average speed of 40 miles per hour.

(a) If Savio is correct, at what time will he arrive at work?



$$T = \frac{D}{S} = \frac{50}{40} = \frac{5}{4} = 1.25$$

$$1.25h = 1\frac{1}{4} \text{ hrs} = 1h \underline{15} \text{ mins}$$



08.45  
 or 8.45 am  
 (3)

In fact, Savio's average speed was greater than 40 miles per hour.

(b) How does this affect your answer to part (a)?

eg. He would get there earlier

.....

.....

(1)

(Total for Question 16 is 4 marks)

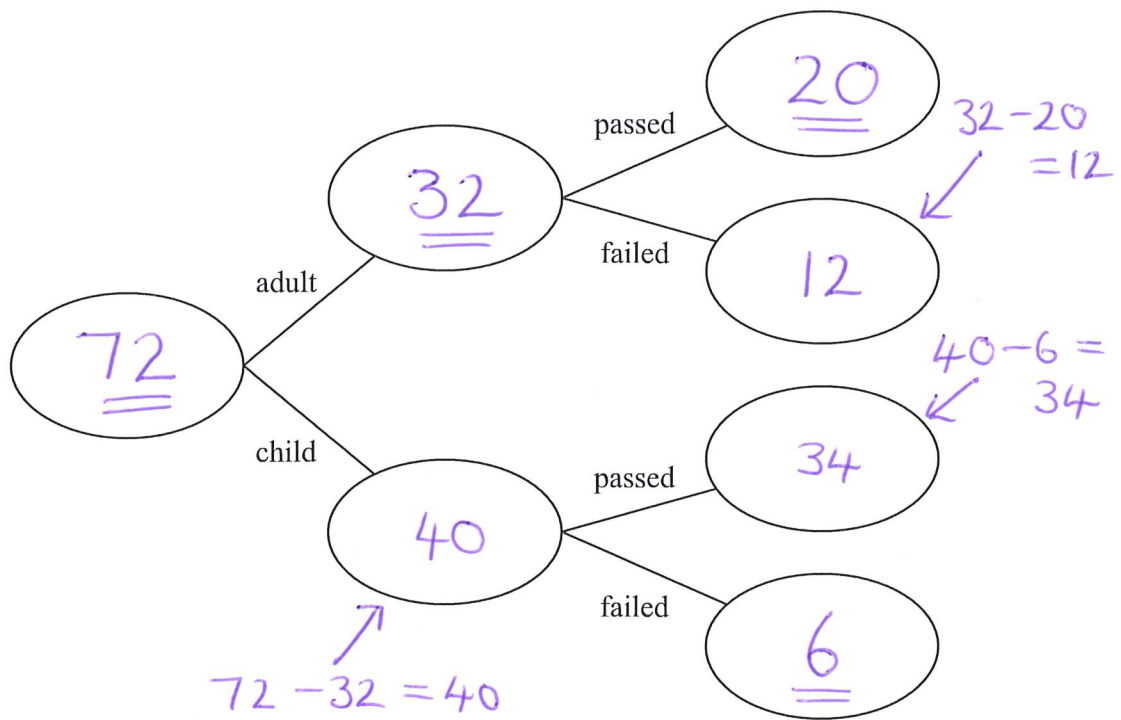


17 72 people did a test.

20 of the 32 adults who did the test passed.

6 of the children who did the test failed.

(a) Use this information to complete the frequency tree.



(3)

One of these people <sup>— out of 72</sup> is picked at random.

(b) Find the probability that this person is an adult who failed the test. <sup>— 12 of these</sup>

$$\frac{12}{72} \quad (\text{or } \frac{1}{6})$$

(2)

(Total for Question 17 is 5 marks)

DO NOT WRITE IN THIS AREA

DO NOT WRITE IN THIS AREA

DO NOT WRITE IN THIS AREA



DO NOT WRITE IN THIS AREA

DO NOT WRITE IN THIS AREA

DO NOT WRITE IN THIS AREA

18 Here is a list of ingredients for making 10 scones.

Ingredients for 10 scones	
75 g	butter
350 g	self-raising flour
40 g	sugar
150 ml	milk
2	eggs

Mia wants to make 25 scones.  
Work out how much sugar she needs.

$$\begin{array}{l}
 10 \text{ scones} - 40\text{g} \\
 \div 2 \downarrow \qquad \qquad \qquad \uparrow \div 2 \\
 5 \text{ scones} - 20\text{g} \\
 \times 5 \downarrow \qquad \qquad \qquad \uparrow \times 5 \\
 25 \text{ scones} - 100\text{g}
 \end{array}$$

..... 100 g

(Total for Question 18 is 2 marks)

19 Increase 240 by 20%

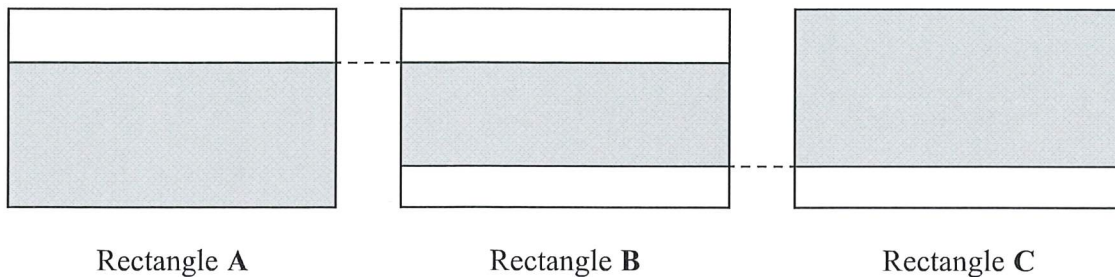
$$\begin{array}{l}
 10\% = 24 \\
 \times 2 \downarrow \qquad \qquad \qquad \uparrow \times 2 \\
 20\% = 48 \\
 \rightarrow 240 + 48 = 288
 \end{array}$$

..... 288

(Total for Question 19 is 3 marks)



20 The diagram shows three identical rectangles A, B and C.



$\frac{5}{8}$  of rectangle A is shaded.

$\frac{9}{11}$  of rectangle C is shaded.

Work out the fraction of rectangle B that is shaded.

$$A: \underline{\text{unshaded}} = 1 - \frac{5}{8} = \frac{3}{8}$$

$$C: \text{unshaded} = 1 - \frac{9}{11} = \frac{2}{11}$$

$$\begin{aligned}
 B: \text{unshaded} &= \frac{3}{8} + \frac{2}{11} \\
 &\begin{array}{l} \times 11 \downarrow \\ \frac{33}{88} + \frac{16}{88} \end{array} \quad \begin{array}{l} \downarrow \times 8 \\ \frac{39}{88} \end{array} \\
 &= \frac{49}{88}
 \end{aligned}$$

$$\text{shaded} = \frac{88}{88} - \frac{49}{88} = \frac{39}{88}$$

$$\frac{39}{88}$$

(Total for Question 20 is 3 marks)

DO NOT WRITE IN THIS AREA

DO NOT WRITE IN THIS AREA

DO NOT WRITE IN THIS AREA



DO NOT WRITE IN THIS AREA

DO NOT WRITE IN THIS AREA

DO NOT WRITE IN THIS AREA

21 Here are the ages, in years, of 15 people.

19	28	29	33	27
27	37	25	27	37
17	45	47	25	26

Show this information in a stem and leaf diagram.

1		9	7						
2		8	9	7	7	5	7	5	6
3		3	7	7					
4		5	7						

↓ Now put the 'leaves' in order.

eg.

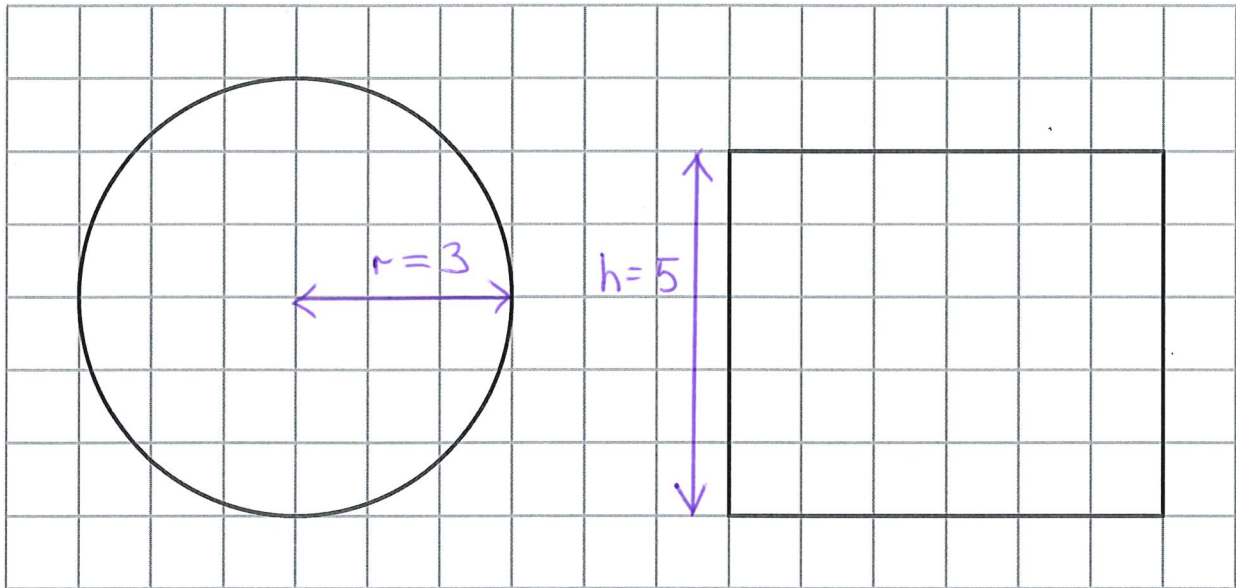
1		7	9						
2		5	5	6	7	7	7	8	9
3		3	7	7					
4		5	7						

Key: 1 7 means 17
----------------------

(Total for Question 21 is 3 marks)



22 The centimetre grid shows the plan and the front elevation of a cylinder.



Plan

Front elevation

Work out the volume of the cylinder.  
Give your answer in terms of  $\pi$

$$\begin{aligned} V &= \pi r^2 h \\ &= \pi \times 3^2 \times 5 \\ &= 45\pi \end{aligned}$$

.....  $45\pi$  cm<sup>3</sup>

(Total for Question 22 is 3 marks)

DO NOT WRITE IN THIS AREA

DO NOT WRITE IN THIS AREA

DO NOT WRITE IN THIS AREA



DO NOT WRITE IN THIS AREA

DO NOT WRITE IN THIS AREA

DO NOT WRITE IN THIS AREA

23 Solve  $7x - 27 < 8$

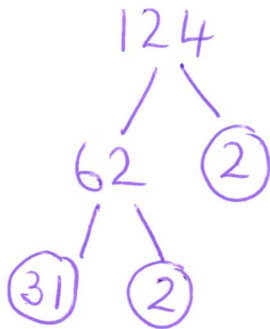
$$\begin{array}{r} 1 \\ +27 \quad | \quad +27 \\ 7x < 35 \\ \div 7 \quad | \quad \div 7 \\ x < 5 \end{array}$$

$$x < 5$$

(Total for Question 23 is 2 marks)

24 Write 124 as a product of its prime factors.

eg.



$$2 \times 2 \times 31$$

$$\text{or } 2^2 \times 31$$

(Total for Question 24 is 2 marks)



25 A delivery company has a total of 160 cars and vans.

the number of cars : the number of vans = 3 : 7

Each car and each van uses electricity or diesel or petrol.

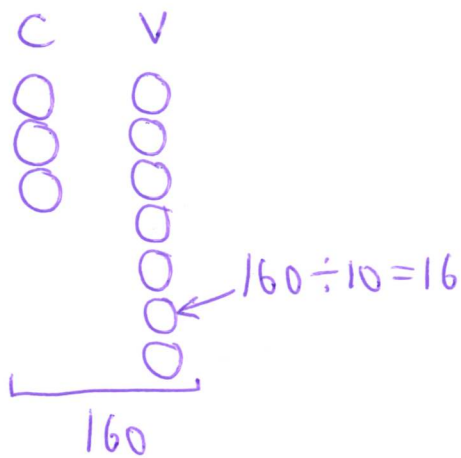
$\frac{1}{8}$  of the cars use electricity.

25% of the cars use diesel.

The rest of the cars use petrol.

Work out the number of cars that use petrol.

You must show all your working.



$$\begin{aligned} \text{cars} & 3 \times 16 = 48 \\ \text{vans} & 7 \times 16 = 112 \end{aligned}$$

$$\text{"} \frac{1}{8} \text{ of cars"} \quad 48 \div 8 = 6$$

$$\text{"} 25\% \text{ of cars"} \quad 48 \div 4 = 12$$

$$\text{"rest of cars"} \quad 48 - 6 - 12 = 30$$

30

(Total for Question 25 is 5 marks)

DO NOT WRITE IN THIS AREA

DO NOT WRITE IN THIS AREA

DO NOT WRITE IN THIS AREA



DO NOT WRITE IN THIS AREA

DO NOT WRITE IN THIS AREA

DO NOT WRITE IN THIS AREA

26 (a) Write  $1.63 \times 10^{-3}$  as an ordinary number.



$$0.00163$$

(1)

(b) Write 438000 in standard form.

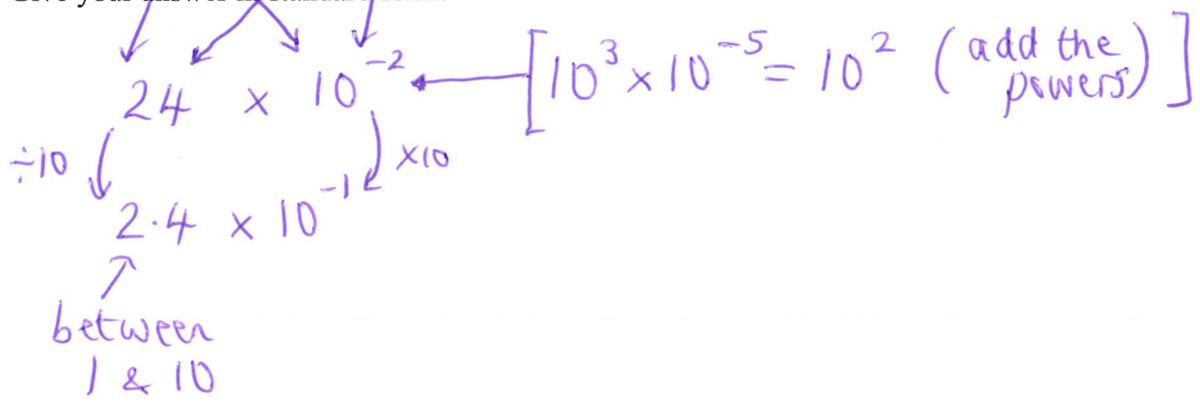


$$4.38 \times 10^5$$

(1)

(c) Work out  $(4 \times 10^3) \times (6 \times 10^{-5})$   
Give your answer in standard form.

between 1 & 10



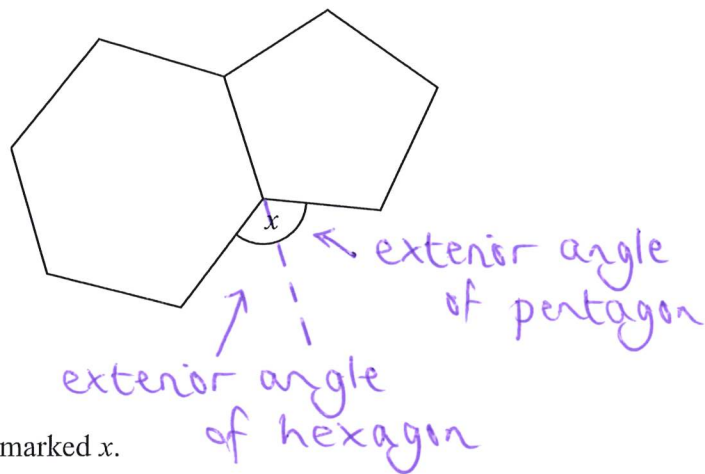
$$2.4 \times 10^{-1}$$

(2)

(Total for Question 26 is 4 marks)



27 Here is a regular hexagon and a regular pentagon.



Work out the size of the angle marked  $x$ .  
You must show all your working.

$$\begin{array}{l} \text{exterior angle} \\ \text{of pentagon} \end{array} = 360 \div 5 = 72$$

$$\begin{array}{l} \text{exterior angle} \\ \text{of hexagon} \end{array} = 360 \div 6 = 60$$

$$x = 72 + 60 = 132$$

132

(Total for Question 27 is 3 marks)



DO NOT WRITE IN THIS AREA

DO NOT WRITE IN THIS AREA

DO NOT WRITE IN THIS AREA

28 (a) Complete the table of values for  $y = x^2 - 3x + 1$

$$\begin{aligned}
 &3^2 - (3 \times 3) + 1 \\
 &= 9 - 9 + 1 \\
 &= 1
 \end{aligned}$$

x	-1	0	1	2	3	4
y	5	1	-1	-1	1	5

$$\begin{aligned}
 &(-1)^2 - (3 \times -1) + 1 \\
 &= 1 - (-3) + 1 \\
 &= 1 + 3 + 1 \\
 &= 5
 \end{aligned}$$

$$\begin{aligned}
 &2^2 - (3 \times 2) + 1 \\
 &= 4 - 6 + 1 \\
 &= -1
 \end{aligned}$$

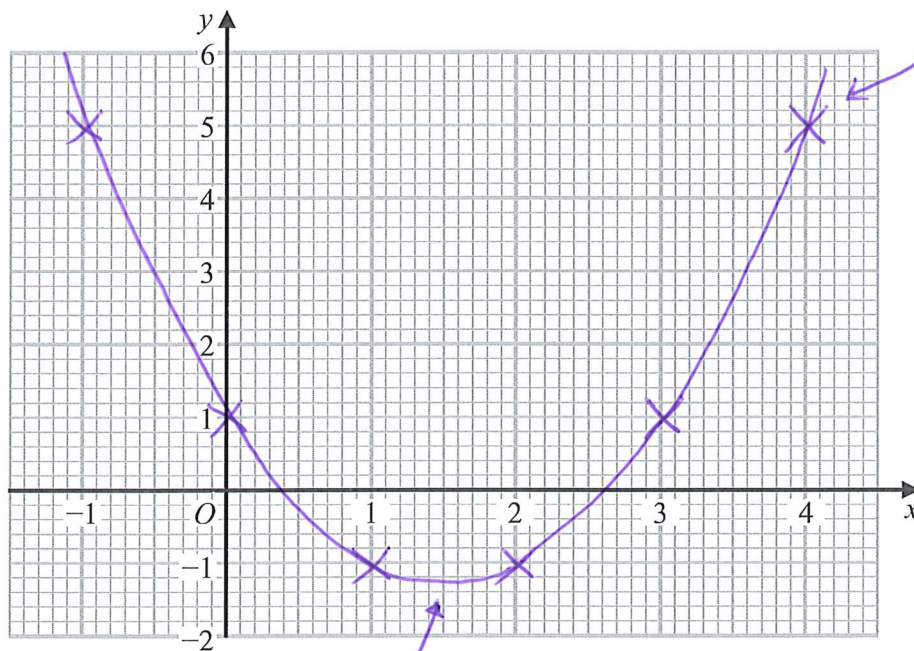
$$\begin{aligned}
 &4^2 - (3 \times 4) + 1 \\
 &= 16 - 12 + 1 \\
 &= 5
 \end{aligned}$$

from table, (2)

(b) On the grid, draw the graph of  $y = x^2 - 3x + 1$  for values of x from -1 to 4

$$\begin{array}{r}
 4 \\
 \hline
 5
 \end{array}
 \downarrow$$

(4, 5)



[Note curve here, slightly below -1]

(2)

(c) Using your graph, find estimates for the solutions of the equation  $x^2 - 3x + 1 = 0$

[roots - where it crosses the x-axis]

0.4, 2.6

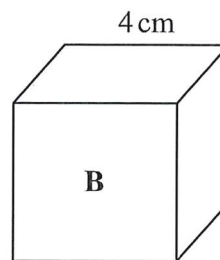
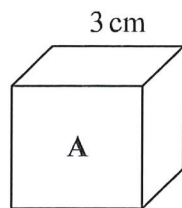
(2)

(Total for Question 28 is 6 marks)

[or accurate from your graph]



29 Here are two cubes, A and B.



Cube A has a mass of 81 g.

Cube B has a mass of 128 g.

Work out

the density of cube A : the density of cube B

Give your answer in the form  $a : b$ , where  $a$  and  $b$  are integers.



$$\begin{aligned} \text{A: volume} &= 3 \times 3 \times 3 = 27 \\ \text{density} &= \frac{\text{mass}}{\text{volume}} = 81 \div 27 = 3 \text{ (g/cm}^3\text{)} \end{aligned}$$

$$\begin{aligned} \text{B: volume} &= 4 \times 4 \times 4 = 64 \\ \text{density} &= 128 \div 64 = 2 \text{ (g/cm}^3\text{)} \end{aligned}$$

3 : 2

(Total for Question 29 is 3 marks)

DO NOT WRITE IN THIS AREA

DO NOT WRITE IN THIS AREA

DO NOT WRITE IN THIS AREA



30 Write down the value of  $\sin 30^\circ$

$\frac{1}{2}$

(Total for Question 30 is 1 mark)

TOTAL FOR PAPER IS 80 MARKS

DO NOT WRITE IN THIS AREA

DO NOT WRITE IN THIS AREA

DO NOT WRITE IN THIS AREA



P 6 6 3 0 6 R A 0 2 3 2 4